



**FREEDOM**

**FOOT PEDAL OPERATION**



QUOTE

# HAUL-ALL EQUIPMENT LTD WASTE & RECYCLING SOLUTIONS



Haul-All Equipment specializes in the design, manufacture, sale and support of waste and recycling systems including storage containers, collection vehicles and transfer stations.

- 40+ years experience
- 30+ Patents & Trademarks
- IGBC Certified Products

Our focus is on delivering high-quality products and pioneering advancements in the industry.

## THE FREEDOM:

### HANDS FREE COLLECTION

The Freedom container offers a hands-free experience with a patented foot pedal design that is user-friendly and certified bear resistant.

Customers like the aesthetics, small footprint and durable design, but not everyone needs the Freedom to be bear resistant. In response, the Freedom can be customized in

a variety of aesthetic and user-interface options including a convenient (“non-bear”) foot pedal and/ or an ergonomic grab handle. Front Loading / Front Unloading for flexible positioning options.

Explore some of the many ways you can customize the Freedom for the perfect installation in your community or project.

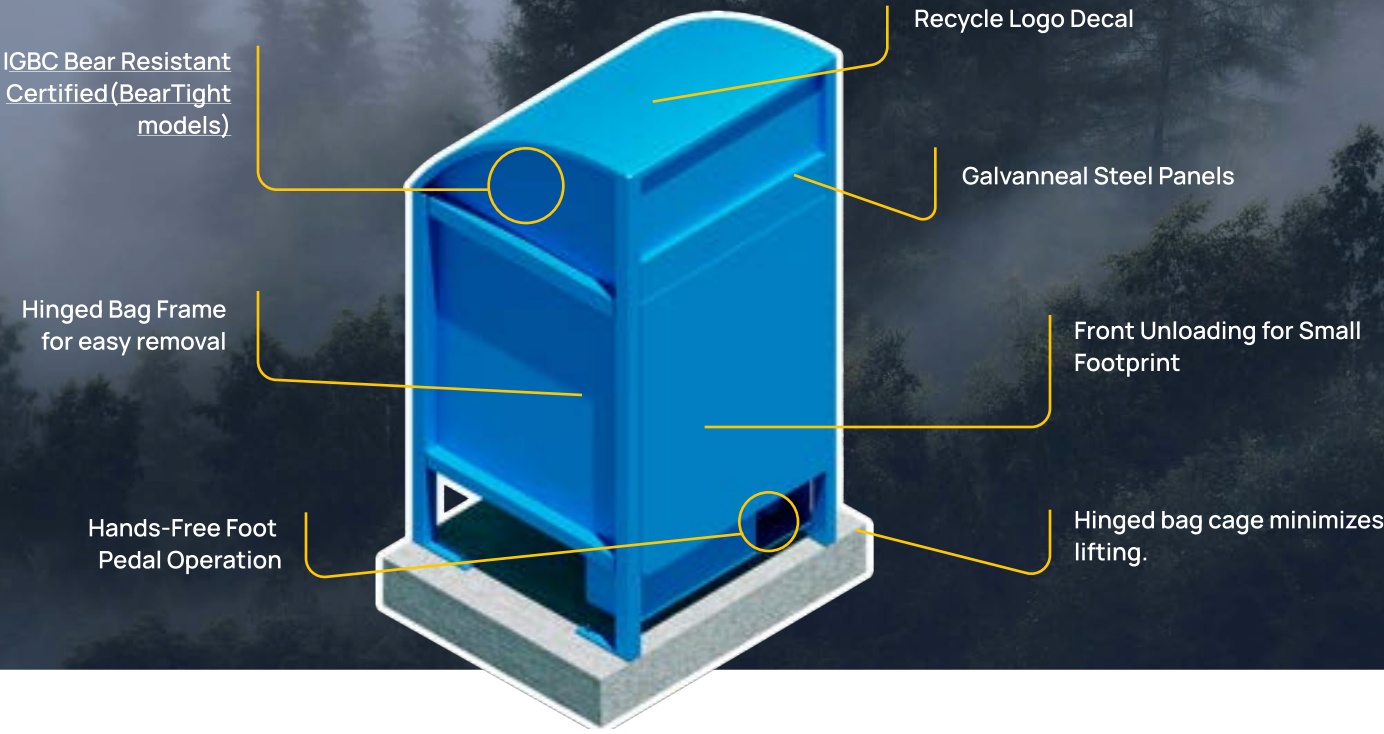
TRUSTED BY



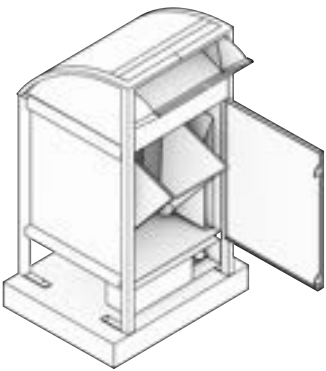


# FREEDOM

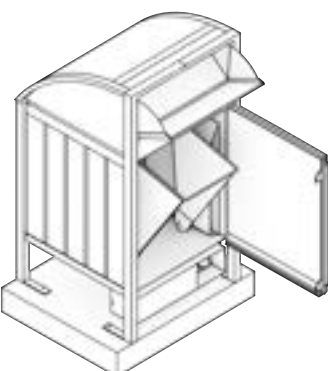
This foot-pedal operated container eliminates the need to use your hands and is ideal for minimizing microbial spread (bacteria and viruses). It is animal resistant and eliminates rodents from becoming vectors in the spread of transferable disease. The patented design has a smooth and reliable operation. The loading chute opens easily using the foot pedal. Users can deposit waste without having to touch the container with their hands.



## MODEL VARIANTS



FREEDOM 32



FREEDOM 55





QUOTE

# DISCOVER THE FEATURES THAT MAKE **FREEDOM** YOUR BEST CHOICE!



**CUSTOM  
DECALS**



**CHUTE  
HANDLE**



**DECORATIVE  
SIDING**



**CONCRETE  
MOUNTING PAD**



**IGBC BEAR  
RESISTANT CERTIFIED**



**HINGED  
BAG FRAME**



**SLOT LOCK  
KEY**

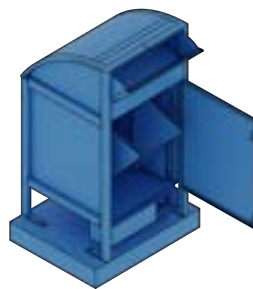


**VINYL  
GRAPHICS WRAP**

## STOCK COLOURS



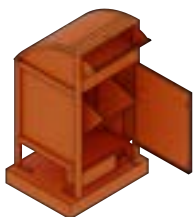
● Neufeldt Green



● Grabber Blue



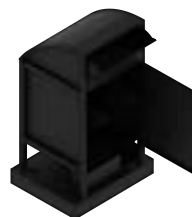
● Forest Green



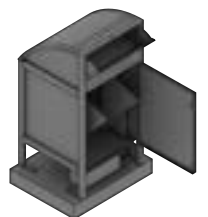
● Orange



● Baron Red



● Black



● Pewter

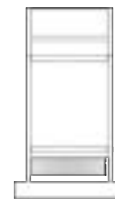
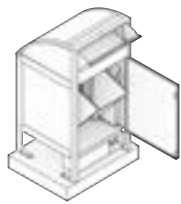


**QUOTE**

# SPECIFICATIONS

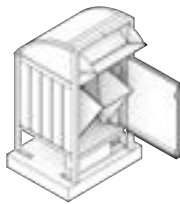
## FREEDOM 32

CAPACITY	HEIGHT	LENGTH	WIDTH	CONSTRUCTION	HINGES & LATCHES	PAINT	WEIGHT	WEIGHT (PRECAST MOUNTING PAD)
120 L (42.2 cu.ft./32 US Gallons)	1090 mm (43 inches)	577 mm (42-1/2 inches)	595 mm (23 inches)	Galvanneal Steel	Stainless Steel	Powder Coat	77 kg (170 lbs)	136 kg (300 lbs)



## FREEDOM 55

210 L (7.4 cu.ft. / 55 US Gallons)	1260 mm (49-1/2 inches)	708 mm (27-3/4 inches)	735 mm (29 inches)	Galvanneal Steel	Stainless Steel	Powder Coat	158 kg (348 lbs)	155 kg (345 lbs)
---------------------------------------	----------------------------	---------------------------	-----------------------	------------------	-----------------	-------------	---------------------	---------------------



**CONTACT OUR TEAM  
FOR TAILORED ADVICE & PRICING**

**1-888-428-5255**

**SALES@HAULALL.COM**

**BOOK A CALL**

**REQUEST A QUOTE**

